



ROUND CYCLE FACILITIES FOR AQUEOUS MEDIA

- *Part-specific customisation of the entire facility (parts support, spraying system, cleaning chambers,...) for perfect cleaning results*
- *Optional immersion cleaning with ultrasound or pressure media circulation*
- *Drying with ambient air, hot air, infrared and/or vacuum (optional)*



Round cycle facility type RUN

FIELDS OF APPLICATION

Intermediate and final cleaning tasks on manufacturing lines with parts of same or similar shape are typical tasks for round cycle facilities. Also parts with complex geometries can be cleaned fast and reliable using this facility concept.

*experienced
competent
environment-conscious*



FACILITY TECHNOLOGY

Due to their low space requirement and short cycle times, round cycle facilities with spray and/or immersion method can be perfectly integrated into production lines for cleaning of individual parts.

Loading of the goods support can be performed either manually by an integrated handling or by a robot. Depending on parts geometries, the parts can be aligned in advance in order to efficiently treat problem areas.

Spray and drying nozzles are individually adjusted to the part to be cleaned. If possible and required, the parts can also be adapted so that boreholes get flushed and highest cleaning requirements are thus met.

In addition to conventional methods such as blowing off and hot air drying, there is also the possibility to dry the parts using vacuum.

EQUIPMENT VARIANTS

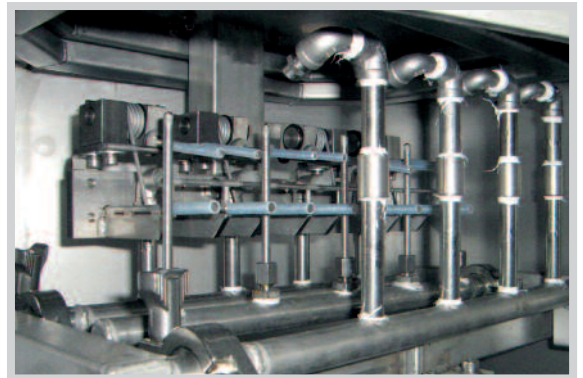
- Integration into production line via parts handling system
- Oil separator, evaporator or complete demin-water recirculation facilities to extend the bath service life
- Immersions baths using pressure media circulation or ultrasound
- Drying with ambient air, hot air, infrared and/or vacuum (optional)

OUR DELIVERY RANG

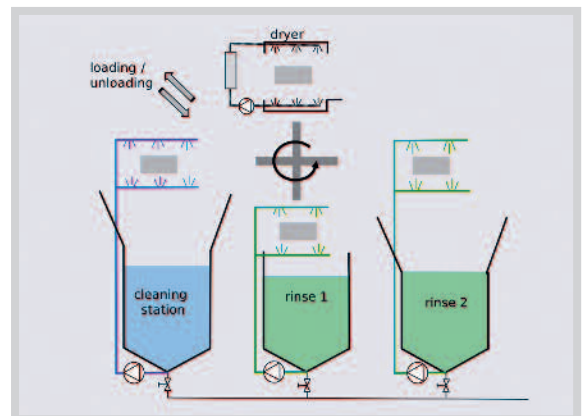
Cleaning and degreasing facilities for aqueous media, halogenated and nonhalogenated solvents.



RUN interior view



Parts-specifically adjusted nozzle arrangement in the spraying stations



Schematic drawing of round circle facilities workflow



Our factory premises in the Enz Valley